

ëLEEC®



ëLEEC

Hyung Kuk, Kim

Sales Division / Director

WeChat



WhatsApp



Kakaotalk



MICRO-NX co.,Ltd

🏠 22, Maeyeo-ro 1-gil, Dong-gu, Daegu, 41059 Republic of Korea

☎ +82 10 9740 3637 📞 +82 53 650 1000 📠 +82 53 650 1001

✉ micronx@micronx.co.kr

🌐 www.micronx.co.kr



Company Overview

MICRO-NX is committed to bridging the gap between dental clinics & labs and manufacturing plants, ensuring the highest standards of quality, specialization, and reliability within the dental industry. With international patents for dental electric micromotors, including implant surgical engines and electric micromotor systems,

MICRO-NX has established itself as a global leader in dental equipment manufacturing.

Our company specializes in the development, design, manufacturing, and export of precision dental equipment, leveraging advanced Swiss-type micromotor technology. MICRO-NX holds over 30 intellectual property rights and patents and was recognized as the world's best dental handpiece manufacturer in 2011.

CORE TECHNOLOGY

- **Ultra-High RPM Motor:** Developed a 150,000 RPM precision brushless motor.
- **Customized Micromotors:** Advanced the design and production of specialized micromotors for future applications.
- **Precision Manufacturing:** Secured technology for high-precision component fabrication.
- **Industry Expansion:** Developed motors for robotics and aerospace industries.
- **Dental Innovation:** Engineered ultra-precision dental implant instruments.
- **Global Patents:** Localized electric motors for dental procedures and secured international patents.
- **Intellectual Property:** Registered 20 patents for Swiss-type BLDC motors.
- **World's First Innovation:** Developed the first LED light-type electric motor with a water spray handpiece.

MICRONX : Official Site & Social Media

LET'S MAKE IT BETTER

WEBSITE
www.micronx.co.kr

Official Website
Access MICRO-NX product details, news, exhibition updates, catalogs, and user manuals for download.

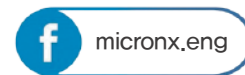
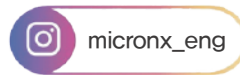


Utilize the 1:1 real-time inquiry channel for product and after-sales support.
※ PC and mobile users may need to install the program



: FOLLOW US

Stay updated with MICRO-NX products, usage guides, events, and news.



CONTENTS

DENTAL

| | |
|---------------------------------------|-----|
| Implant Surgical Engine | 3p |
| Electric Wireless Torque Driver | 5p |
| Clinical Electric Micromotor | 7p |
| Dental Handpiece Series | 11p |

LABORATORY

| | |
|---|-----|
| Electric High Speed Zirconia Trimming Motor | 15p |
| Brushless type Motor | 20p |
| Carbon brush Motor | 21p |
| Rechargeable & Portable type Motor | 22p |

ELEC ENGINE™

Implant Surgical Engine

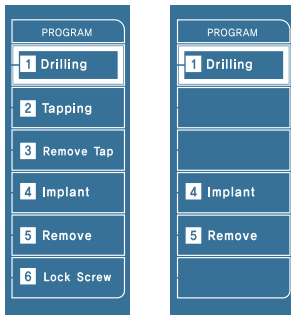


KEY POINT

- **High Torque Power:** Up to 70N.cm (with a 20:1 gear handpiece), 80N.cm (with a 32:1 gear handpiece)
- **Real-time Monitoring:** Torque and RPM values displayed on a **5.5-inch LCD screen**
- **Enhanced Safety Features:** **Torque-limiting function** automatically stops operation when the preset torque value is exceeded
- **Optic Motor for Clear Visibility:** Minimizes shadow areas for better illumination during procedures
- **Customizable Settings:** **Stores up to 9 different torque and RPM configurations** for efficiency
- **High-precision calibration function**



CLINICAL EXAMPLE



Program editing function

Unused treatment programs can be deleted or edited.



Disable a Program

: Press and hold the Program button to disable unused programs.



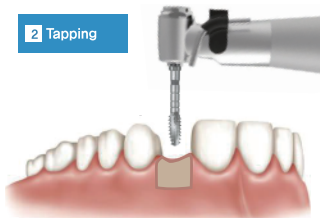
Delete a Program

: Press and hold the Rotation Direction Setting button to delete a program. Deleted programs can also be restored if needed.

Thread Cutting Function

Thread cutting is available in Tapping Mode.

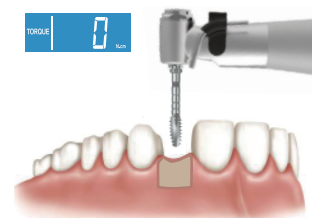
This function supports implant surgery by tapping into dense (D1) bone structures.



Select Tapping Mode & Set Torque



When Preset Torque is Reached



Automatic Reverse Activation



SPECIFICATION



Micromotor

Model: ISM-B70L
Max.Speed: 40,000rpm
Max.Torque: 80N.cm(32:1)
Dimension: Ø24x100mm(L)
Weight: 170g
LED: Yes

Controller

Model: ISE-270M
Input voltage: (100-120/220-240) V AC
Frequency: 50/60Hz
Power Consumption: 150VA
Max.coolant flow rate: 110ml/min
Fuse: [250V-T2.0 AL] x 2EA
Dimension: W285 x L250 x H120mm

Foot Switch

Model: FS-V2
Speed control: Variable
Foot control Function:
Program control
Coolant control
Rotation Direction control
Motor On/Off control

ELEC DRIVER™ 35^{N·cm} / 60^{rpm}

Electric Wireless Torque Driver



KEY POINT

TD-C60

- All-in-One Prosthetic Screw Connection
: Streamlines the process with high precision
- Orthodontic Mini Screw Insertion: Designed for ease and accuracy
- Torque Calibration System (TCS): Ensures precise torque control
- Lightweight and Ergonomic Design
: Enhances user comfort and reduces fatigue



SPECIFICATION

Torque Driver (Main Body)

Model: TD-C60
 Speed range: 15/30/45/60rpm
 Torque stages: 5/10/15/20/25/30/35Ncm
 Battery type: Li-Polymer
 Battery capacity: 7.4V DC/ 360mAh
 Dimension: W30 x L28 x H200mm
 Weight: 150g
 Screw driver: ISO 1797 (Type 1)

Charging Cradle

Input: MFDS, CE 0.5A / FDA 1.0A
 Output: 8.4V DC/ 360mAh
 Dimension: W105 x L111 x H51mm
 Weight: 80g

AC/DC Adaptor

Input: MFDS, CE 100~240 V AC, 0.3A
 FDA 100~240 V AC / 1.0A
 Output: MFDS, CE 12 V DC, 500 mA
 FDA 12 V DC / 1000mA



ELEC DRIVER™ 40^{N·cm} / 30^{rpm} Slim

Electric Wireless Torque Driver



KEY POINT

TD-C30

- All-in-One Prosthetic Screw Connection
: Streamlines the process with high precision
- Orthodontic Mini Screw Insertion: Designed for ease and accuracy
- Torque Calibration System (TCS): Ensures precise torque control
- Lightweight and Ergonomic Design
: Enhances user comfort and reduces fatigue



SPECIFICATION

Handpiece

Model: TD-C30
 Speed range: 10/20/30rpm
 Torque stages: 5-40Ncm(5Ncm step)
 Battery Type: Li-Polymer
 Battery Capacity: 7.4 V DC/ 360mAh
 Dimension: W27 x L23 x H157mm
 Weight: 98g (without Contra-angle)

Charging Cradle

Input: 12 V DC/ 500 mA
 Output: 8.4 V DC/ 360 mAh
 Dimension: W82 x L112 x H65(mm)
 Weight: 92g

AC/DC Adaptor

Input: 100-240 V AC, 0.3A
 Output: 12 V DC, 0.5A



ÉLECTM 2mini

Clinical Electric Micromotor



KEY POINT

- **Ultra-High RPM:** Adjustable from 1,000 to 200,000 RPM
- **Advanced Cooling System:** Prevents overheating and extends motor lifespan
- **Multi-Memory Function:** Save and recall user settings instantly
- **Unit Chair Compatibility:** Easily integrates with all types of dental unit chairs

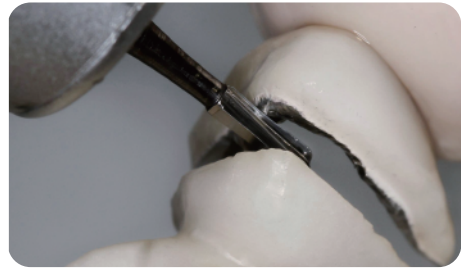


CLINICAL EXAMPLE



Tooth Preparation

Enables faster and smoother preparation compared to a typical high-speed air turbine handpiece.



Dental Prosthesis Removal

Effectively removes **strong prosthetic materials** such as zirconia, amalgam, and PFM with ease.



Prosthesis Margin Refinement

Delivers **high power even at low speeds**, allowing for precise margin molding and optimal prosthesis completion.



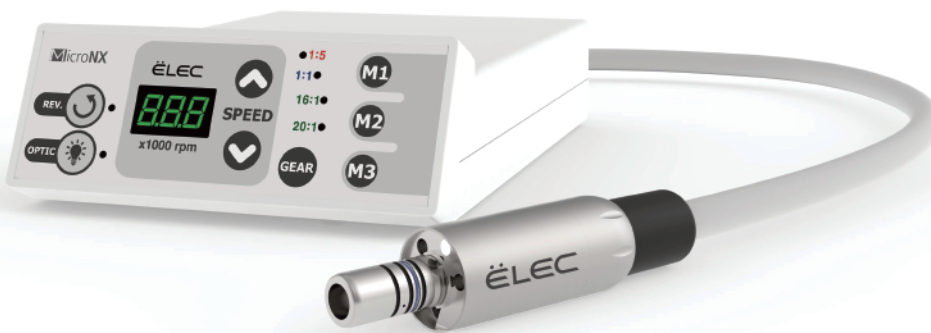
Other Applications

Fast and efficient for **precision drilling**, including implant stent production.



SPECIFICATION

Premium Mobile Type



Micromotor(mini)

Model: ELM-B40S
Max.Speed: 40,000rpm
Max.Torque: 3N.cm
Max.Current: 5A
Dimension: Ø20 x L63mm
Weight: 68g
LED: Fiber optic
Water: Internal water

Controller

Model: EL-M40S
Input: 100-240V, 1.4-0.7A,
Frequency: 47-63Hz
Power consumption: 105VA(max.)
Dimension: W70 x D95 x H35mm
Speed range: 100 ~ 200,000rpm
Class of protection: IPX0

Handpiece

Model: CA100L / SA100L
Max.Speed: 40,000rpm
Ratio: 1:1
Material: Stainless steel
Optic : Fiber optic
Water: Internal water



SPECIFICATION

Premium Panel Type



Micromotor(mini)

Model: ELM-B40S
 Max.Speed: 40,000rpm
 Max.Torque: 3N.cm
 Max.Current: 5A
 Dimension: Ø20 x L63mm
 Weight: 68g
 LED: Fiber optic
 Water: Internal water

Panel

Model: ELCP-BT
 Dimension: W113 x D12 x H44(mm)

Built-in board

Model: EMT-B40K
 Input: AV24V, 50/60Hz
 Power consumption: 100VA(Max.)
 Dimension: W70 x D95 x H35(mm)

Handpiece

Model: CA100L/ SA100L
 Max.Speed: 40,000rpm
 Ratio: 1:1
 Material: Stainless steel
 Optic: Fiber optic
 Water: Internal water

Standard Panel Type



Micromotor

Model: ELM-B40I
 Max.Speed: 40,000rpm
 Max.Torque: 3N.cm
 Max.Current: 5A
 Dimension: Ø20 x L63mm
 Weight: 70g
 LED: No
 Water: Internal water

Panel

Model: ELCP-BT
 Dimension: W113 x D12 x H44(mm)

Built-in board

Model: EMT-B40K
 Input: AV24V, 50/60Hz
 Power consumption: 100VA(Max.)
 Dimension: W70 x D95 x H35mm

Handpiece

Model: CA100R/ SA100R
 Max.Speed: 40,000rpm
 Ratio: 1:1
 Material: Stainless steel
 Optic: No
 Water: Internal water



SPECIFICATION

Basic Panel Type



Micromotor

Model: ELM-B40M
 Max.Speed: 40,000rpm
 Max.Torque: 3N.cm
 Max.Current: 5A
 Dimension: Ø20 x L63mm
 Weight: 70g
 LED: No
 Water: No

Panel

Model: ELCP-BT
 Dimension: W113 x D12 x H44(mm)

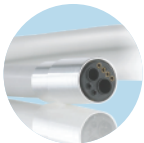
Built-in board

Model: EMT-B40K
 Input: AV24V, 50/60Hz
 Power consumption: 100VA(Max.)
 Dimension: W70 x D95 x H35mm

Handpiece

Model: CA100/ SA100
 Max.Speed: 40,000rpm
 Ratio: 1:1
 Material: Stainless steel
 Optic : No
 Water: No

Brush NXOP-100E

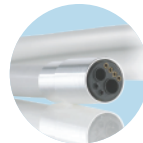


Micromotor

Model: NXOP-100E
 Max.Speed: 40,000rpm
 Max.Torque: 3.1N.cm
 Type: Carbon brush
 Weight: 105g
 LED: Fiber optic
 Water: YES
 Control board: EMT-D35K

Connect a 6-hole tubing to a dental unit

Brush NXHW-100E



Micromotor

Model: NXHW-100E
 Max.Speed: 40,000rpm
 Max.Torque: 3.1N.cm
 Type: Carbon brush
 Weight: 105g
 LED: No
 Water: YES
 Control board: EMT-D35K

ELEC ANGLE SERIES™

Dental Handpiece Series

*PERFORM BETTER,
COST LESS*



KEY POINT

- High-speed contra-angle handpieces: Delivering **up to 200,000 RPM**
- Durable **stainless steel**: Built for longevity and precision
- Ergonomic lightweight design: Reduces hand fatigue for extended procedures
- Powerful cutting efficiency: **Suitable for zirconia, amalgam, and PFM restorations**

1:1
RATIO

Low Speed Contra Angle Series

Accurate and stable rotation of up to 40,000rpm and an internal water spray improves work convenience.



Optic model

Model: CA100L
Ratio: 1:1
Max.Speed: 40,000rpm
Dimension: Ø20 x L95mm
Weight: 79g
Material: Stainless steel
Optic: Fiber optic
Water: Internal water
Bur: CA bur(Ø2,35)



Non optic model

Model: CA100R
Ratio: 1:1
Max.Speed: 40,000rpm
Dimension: Ø20 x L95mm
Weight: 80g
Material: Stainless steel
Optic: No
Water: Internal water
Bur: CA bur(Ø2,35)



Non optic model

Model: CA100S
Ratio: 1:1
Max.Speed: 40,000rpm
Dimension: Ø20 x L93mm
Weight: 80g
Material: Stainless steel
Optic: No
Bur: CA bur(Ø2,35)



Non optic model

Model: CA100
Ratio: 1:1
Max.Speed: 40,000rpm
Dimension: Ø20 x L84mm
Weight: 42g
Material: Stainless steel
Optic: No
Bur: CA bur(Ø2,35)

1:1
RATIO

Low Speed Straight Handpiece Series

Accurate and stable rotation up to 40,000rpm and an internal water spray improves work convenience.



Optic model

Model: SA100L
Ratio: 1:1
Max.Speed: 40,000rpm
Dimension: Ø20 x L80mm
Weight: 78g
Material: Stainless steel
Optic: Fiber optic
Water: Internal water
Bur: HP bur(Ø2,35)



Non optic model

Model: SA100R
Ratio: 1:1
Max.Speed: 40,000rpm
Dimension: Ø20 x L80mm
Weight: 78g
Material: Stainless steel
Optic: No
Water: Internal water
Bur: HP bur(Ø2,35)



Non optic model

Model: SA100
Ratio: 1:1
Max.Speed: 40,000rpm
Dimension: Ø20 x L85mm
Weight: 51g
Material: Stainless steel
Optic: No
Bur: HP bur(Ø2,35)

1:5
RATIO

High Speed Contra Angle Series

Accurate and stable rotation of up to 200,000rpm and an internal water spray improves work convenience.



Optic model

Model: CA500L
Ratio: 1:5
Max.Speed: 200,000rpm
Dimension: Ø20 x L95mm
Weight: 74g
Material: Stainless steel
Optic: Fiber optic
Water: Internal Water
Bur: FG bur(Ø1,6)

20:1
RATIO

Implant Surgical Angle Series

With a powerful torque up to 70N.cm and one-touch disassembly and assembly, maintenance such as cleaning and sterilization is easy.



Optic model

Model: SG200L
Ratio: 20:1
Max.Torque: 70N.cm
Dimension: Ø20 x L95mm
Weight: 80g
Material: Stainless steel
Optic: Fiber optic
Bur: CA bur(Ø2.35)



Non optic model

Model: SG200
Ratio: 20:1
Max.Torque: 70N.cm
Dimension: Ø20 x L95mm
Weight: 82g
Material: Stainless steel
Optic: No
Bur: CA bur(Ø2.35)



Optic model

Model: CA200L
Ratio: 20:1
Max.Torque: 70N.cm
Max.Speed: 2,000rpm
Dimension: Ø20 x L95mm
Weight: 81g
Material: Stainless steel
Optic: Fiber optic
Water: **Internal Water** & Outside water Compatible
Bur: CA bur(Ø2.35)

16:1
RATIO

Endodontic Angle Series



Optic model

Model: CA160L
Ratio: 16:1
Max.Speed: 2,500rpm
Dimension: Ø20 x L95mm
Weight: 81g
Material: Stainless steel
Optic: Fiber optic
Bur: CA bur(Ø2,35)



Non optic model

Model: CA160
Ratio: 16:1
Max.Speed: 2,500rpm
Dimension: Ø20 x L95mm
Weight: 80g
Material: Stainless steel
Optic: No
Bur: CA bur(Ø2,35)



Non optic model

Model: CA160S
Ratio: 16:1
Max.Speed: 2,500rpm
Dimension: Ø20 x L93mm
Weight: 80g
Material: Stainless steel
Optic: No
Bur: CA bur(Ø2,35)

4:1
RATIO

Low Speed Contra Angle Series

Accurate and stable rotation of up to 10,000rpm.



Optic model

Model: CA040L
Ratio: 4:1
Max.Speed: 10,000rpm
Dimension: Ø20 x L95mm
Weight: 81g
Material: Stainless steel
Optic: Fiber optic
Bur: CA bur(Ø2,35)



Non optic model

Model: CA040
Ratio: 4:1
Max.Speed: 10,000rpm
Dimension: Ø20 x L95mm
Weight: 81g
Material: Stainless steel
Optic: No
Bur: CA bur(Ø2,35)

ÈLEC AQUA™

Electric High Speed Zirconia Polishing Motor

ML-A150



KEY POINT

- **Ultra-High Speed:** Electric motor reaches **150,000 RPM**, ensuring high efficiency in zirconia ceramic processing.
- **Cartridge-Free Design:** Eliminates the need for periodic cartridge replacements.
- **Enhanced Durability:** LED and water spray prevent cracks, maximizing handpiece performance.
- **Dust Prevention:** Air release system prevents dust penetration into the handpiece.
- **Versatile Operation:** Water spray on/off feature supports both wet and dry usage.
- **Modular Design:** Two-stage detachable system allows for independent controller setups.



CLINICAL EXAMPLE



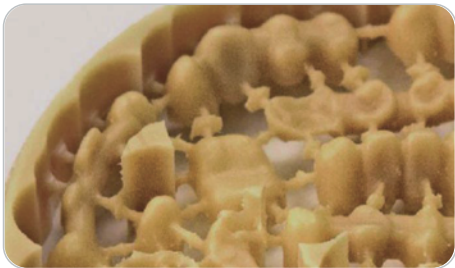
Delicate Groove Formation

Generates **high power even at low speeds**, enabling precise margin molding for optimal prosthesis completion.



Crack Prevention

Water spray function **controls injection volume** and prevents zirconia microcracks caused by high temperatures.



Superior Work Speed

Processes **four times more zirconia prostheses** in the same time with the same quantity.



Easy Handling for Laboratories

Designed for **effortless operation**, reducing stress during use.



SPECIFICATION



Controller

Model: ML-A150
Power supply voltage: 110-120V/220-240V
Frequency: 50/60Hz
Power consumption: 80VA
Fuse: 250V-T2.0Ah
Weight: 3.65kg
Dimension: W115 x D210 x H270mm

Handpiece

Model: BL-A150NS
Type: Brushless type
Max.Speed: 150,000rpm
Max.Torque: 4.0Ncm
Dimension: Ø25 x L101mm
Bur: FG bur Ø1.6mm
with Water Spray & LED Light

ÈLEC AQUA™

Electric High Speed Zirconia Polishing Motor

AQ-A150



KEY POINT

- **Ultra-High Speed:** Electric motor reaches up to **150,000 RPM**, delivering exceptional efficiency in zirconia ceramic processing.
- **Cartridge-Free Design:** Eliminates the need for periodic cartridge replacements.
- **Enhanced Durability:** LED and water spray prevent cracks, maximizing handpiece efficiency.
- **Dust Prevention:** Air release system prevents dust penetration into the handpiece.
- **Versatile Operation:** Water spray on/off feature supports both wet and dry usage.
- **Modular Design:** Two-stage detachable system allows for independent controllers.
- **Flexible Installation:** The main controller can be securely mounted under a desk.



By desk setup



Reference



ELEC AQUA

AQ-A150

Controller

Model(Main): AQ-A150HL
 Model(Water Supply): AQ-A150W
 Power supply: 110V-120V/ 220-240V
 Frequency: 50/60Hz
 Power consumption: 80VA
 Fuse: 250V-T2.0Ah
 Weight: (M)2.64kg / (W)1.23kg
 Dimension: (M)W70xD283xH220mm
 (W)W115xD210xH190mm

Handpiece High

Model: BL-A150NS
 Type: Brushless type
 Max.Speed: 150,000rpm
 Max.Torque: 4.0N.cm
 Dimension: Ø25 x L101mm
 Bur: FG bur Ø1.6mm with
 Water Spray & LED Light

ELEC AQUA DUAL

AQ-A150D

Controller

Model(Main): AQ-A150HL
 Model(Water Supply): AQ-A150W
 Power supply: 110V-120V/ 220-240V
 Frequency: 50/60Hz
 Power consumption: 80VA
 Fuse: 250V-T2.0Ah
 Weight: (M)2.64kg / (W)1.23kg
 Dimension: (M)W70xD283xH220mm
 (W)W115xD210xH190mm

Handpiece High

Model: BL-A150NS
 Type: Brushless type
 Max.Speed: 150,000rpm
 Max.Torque: 4.0N.cm
 Dimension: Ø25 x L101mm
 Bur: FG bur Ø1.6mm with
 Water Spray & LED Light

Handpiece Low

Model: BL-800C
 Type: Brushless type
 Max.Speed: 50,000rpm
 Max.Torque: 7.0N.cm
 Dimension: Ø25 x L158mm
 Bur: Ø2,35mm



ELEC TD

BL-TD

Controller

Model: BL-TD
 Power supply: 110V-120V/ 220-240V
 Frequency: 50/60Hz
 Power consumption: 80VA
 Fuse: 250V-T2.0Ah
 Weight: 2.64kg
 Dimension: W70xD283xH220mm

Handpiece Low

Model: BL-800C
 Type: Brushless type
 Max.Speed: 50,000rpm
 Max.Torque: 7.0N.cm
 Dimension: Ø25 x L158mm
 Bur: Ø2,35mm

Dental Laboratory Handpiece



KEY POINT

- **High Torque Output:** Maintains consistent performance across all rotation ranges
- **Sealed Motor Design:** **Reduces noise and vibration** while extending durability
- **Compact and Ergonomic:** **Lightweight** design for optimal user comfort

BRUSHLESS TYPE



BL-T&K

Max.50,000rpm brushless type motor

Controller

Model: BL-T&K
Input: 120V/ 230V
Output: DC 0~30V
Frequency: 50/60Hz
Max.current: 3A
Weight: 2,9kg
Dimension: W83xD290xH240mm

Handpiece

Model: BL-800C
Type: Brushless type
Max.Speed: 50,000rpm
Max.Torque: 7.0N.cm
Dimension: Ø25 x L158mm
Bur: Ø2,35mm



BL-F(D)

Max.50,000rpm brushless type motor

Controller

Model: BL-F(D)
Input: 120V/ 230V
Output: DC 0~30V
Frequency: 50/60Hz
Max.current: 3A
Weight: 2,5kg
Dimension: W125xD190xH120mm

Handpiece

Model: BL-800C
Type: Brushless type
Max.Speed: 50,000rpm
Max.Torque: 7.0N.cm
Dimension: Ø25 x L158mm
Bur: Ø2,35mm



BL-F

Max.50,000rpm brushless type motor

Controller

Model: BL-F
Input: 120V/ 230V
Output: DC 0~30V
Frequency: 50/60Hz
Max.current: 3A
Weight: 3,1kg
Dimension: W225xD305xH100mm

Handpiece

Model: BL-800C
Type: Brushless type
Max.Speed: 50,000rpm
Max.Torque: 7.0N.cm
Dimension: Ø25 x L158mm
Bur: Ø2,35mm

CARBON BRUSH TYPE



300D

Carbon brush type motor

Controller

Model: 300D
Input: 120V/ 220, 230V
Output: DC 0~30V
Frequency: 50/60Hz
Max.current: 2A
Weight: 2,3kg
Dimension: W81xD222xH166mm

Handpiece

Model: 170S
Type: Carbon brush type
Weight: 200g
Dimension: Ø25 x L156mm
Bur: Ø2,35mm



300B

Carbon brush type motor

Controller

Model: 300B
Input: 120V/ 220, 230V
Output: DC 0~30V
Frequency: 50/60Hz
Max.current: 2A
Weight: 2,3kg
Dimension: W168xD168xH75mm

Handpiece

Model: 170S
Type: Carbon brush type
Weight: 200g
Dimension: Ø25 x L156mm
Bur: Ø2,35mm



New NX-201N

Carbon brush type motor

Controller

Model: New NX-201N
Input: 120V/ 220, 230V
Output: DC 0~30V
Frequency: 50/60Hz
Max.current: 2A
Weight: 1,3kg
Dimension: W112xD190xH84mm

Handpiece

Model: 170S
Type: Carbon brush type
Weight: 200g
Dimension: Ø25 x L156mm
Bur: Ø2,35mm

RECHARGEABLE & PORTABLE TYPE



M1

Max.25,000rpm brush type motor

Controller

Model: M1
Input: AC 100V ~ AC240V
Output: DC 14.8V
Frequency: 50/60Hz
Max.current: 1.2A
Weight: 185g
Dimension: W67xD132xH30mm

Handpiece

Model: M110
Type: Carbon brush type
Max.Speed: 25,000rpm
Weight: 120g
Dimension: Ø25 x L136mm
Bur: Ø2.35mm



M1+

Max.25,000rpm brush type motor

Controller

Model: M1+
Input: AC 100V ~ AC240V
Output: DC 14.8V
Frequency: 50/60Hz
Max.current: 1.2A
Weight: 185g
Dimension: W67xD132xH30mm

Handpiece

Model: M110
Type: Carbon brush type
Max.Speed: 25,000rpm
Weight: 120g
Dimension: Ø25 x L136mm
Bur: Ø2.35mm



M4

Max.25,000rpm brush type motor

Controller

Model: M4
Input: AC 100V ~ AC240V
Output: DC 14.8V
Frequency: 50/60Hz
Max.current: 1.2A
Weight: 185g
Dimension: W69xD130xH30mm

Handpiece

Model: M110
Type: Carbon brush type
Max.Speed: 25,000rpm
Weight: 120g
Dimension: Ø25 x L136mm
Bur: Ø2.35mm



LET'S MAKE IT BETTER

For the standardization and specialization of quality,
our research institutes and factories maintain continuous communication.
We are also at the forefront of quality innovation, building trust and value with our customers.
MICRO-NX Co., Ltd. Constantly strives to be a creative and forward-thinking company.

MICRO NX
LET'S MAKE IT BETTER

MICRO-NX CO., Ltd
22, Maeyeo-ro 1-gil, Dong-gu, Daegu, 41059 Republic of Korea
Tel. + +82 53 650 1000 Fax. +82 53 650 1001
Email: micronx@micronx.co.kr Web: www.micronx.co.kr

OFFICIAL CHANNEL :

WEBSITE



WhatsApp



FOLLOW US:

